

# Installation Instructions

## 1801125 Trailer Hitch

### Capacity

#### Weight Carrying

Trailer Load: 3500 lbs.

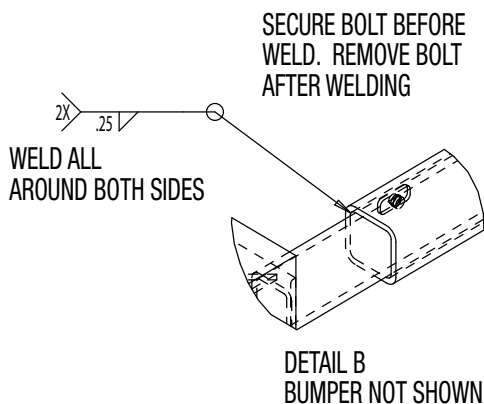
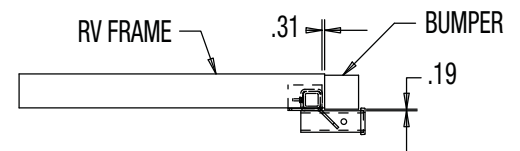
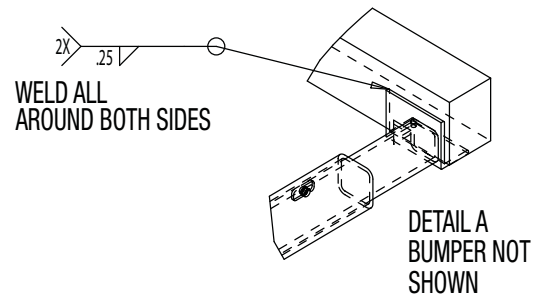
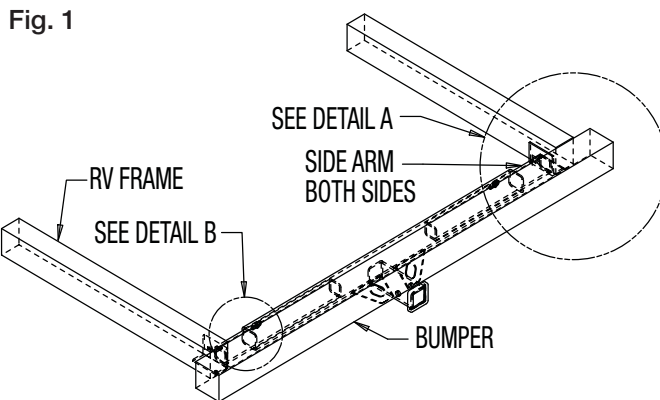
Tongue Load: 350 lbs.

Capable of different mount ranging from 47.38" to 77.0" measuring from the inside frame.

- **Do Not Bolt to Frame (weld only)**
- Hitch must be welded to the RV frame
- Hitch is rated for Towing (Class II)
- Frequent visual inspection is recommended

**⚠ WARNING**

Do not attach hitch to a frame which may be corroded, damaged, or weak. Serious injuries can occur. Do not exceed rating provided.



**Warranty**

Buyers Products Co. warrants all truck/trailer hardware manufactured or distributed by it, to be free from defects in material and workmanship for a period of one year from date of shipment. Parts must be properly installed and used under normal conditions. Any product which has been altered, including modification, misuse, accident or lack of maintenance will not be considered under warranty. Normal wear is excluded. The sole responsibility of Buyers Products Co. under this warranty is limited to repairing or replacing any part or parts which are returned, prepaid, and are found to be defective by Buyers Products Co. Authorization from Buyers Products Co. must be obtained before returning any part. No charges for transportation or labor performed on Buyers' products will be allowed under this warranty.