

# Installation Instructions

## 1801300 2.5" Hitch

## 1801301 2" Hitch

1999 – Current Ford Cab & Chassis F350/F450

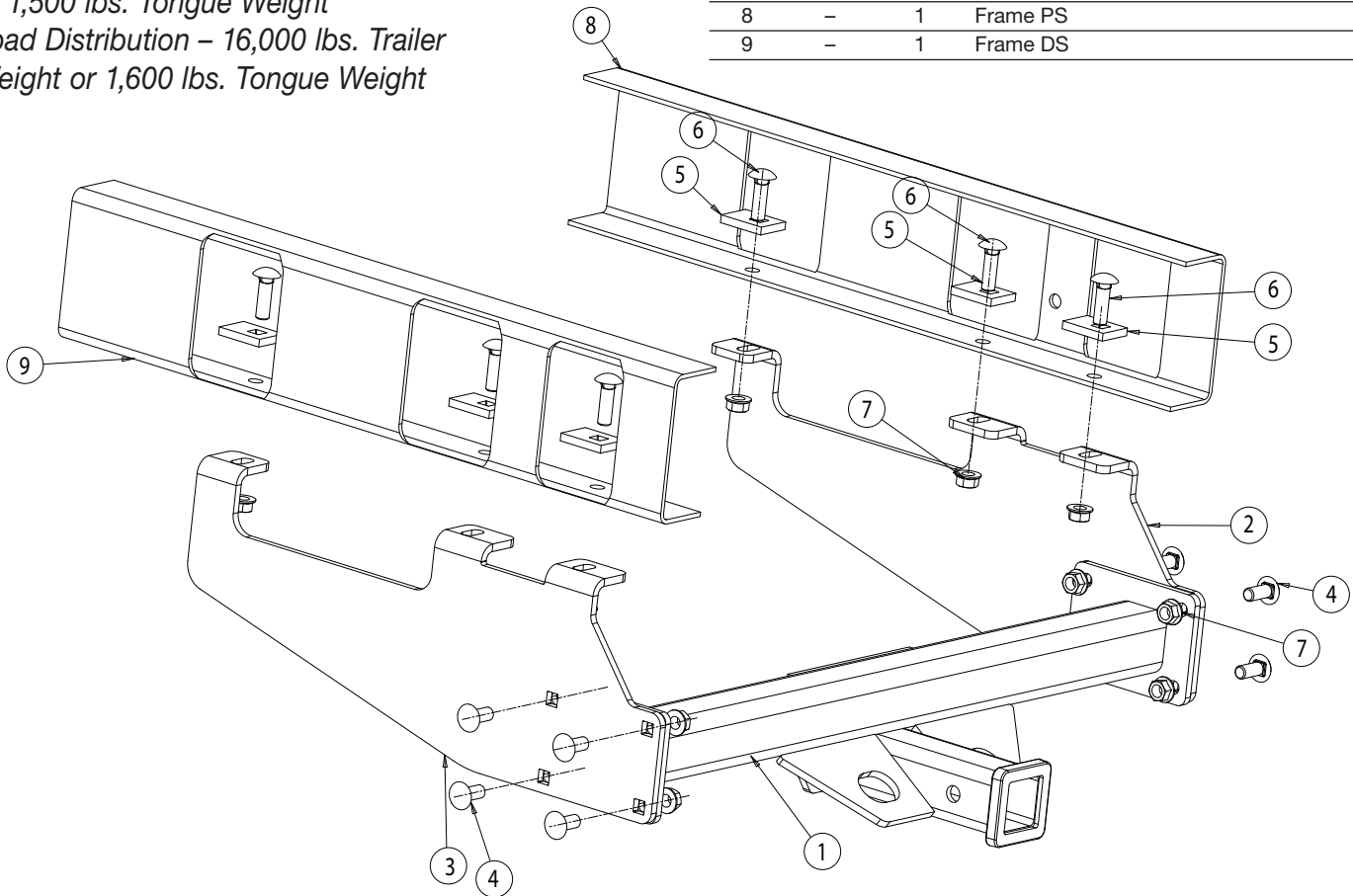
### Capacity

Load Carrying – 15,000 lbs. Trailer Weight  
or 1,500 lbs. Tongue Weight

Load Distribution – 16,000 lbs. Trailer  
Weight or 1,600 lbs. Tongue Weight

### Bill of Materials

ITEM	PART NO.	QTY.	DESCRIPTION
1	3014737	1	Hitch, Center Mount Weldment
2	3014732	1	Side Plate, PS Universal 34" Hitch
3	3014733	1	Side Plate, DS Universal 34" Hitch
4	3012580	8	Bolt, Carriage 1/2-13 x 1.25 Gr. 5 ZN
5	3014859	6	Rectangle, Square Hole 2" L
6	3002215	6	Bolt, Carriage 1/2-13 x 1.75 Gr. 5 ZN
7	92401212	14	Nut, HX Flng 1/2-13 ZN
8	–	1	Frame PS
9	–	1	Frame DS



**1.** Fasten the two SidePlates (item 2&3) onto the Center Mount Weldment (1) using eight Carriage bolts (4) and eight Flange nuts (7) as shown.

**2.** Position the small Rectangular Spacer (5) at the three designated holes. **NOTE: These holes may have to be drilled/enlarge Ø.531" and align with the SidePlates (2&3). It may be necessary to clamp the hitch onto the frames and mark the holes. Do not drill into wiring harnesses.**

**3.** Raise the Hitch into position where the Rectangles

are positioned. Secure the Hitch onto the frame using six Carriage bolts (6) and six Flange nuts (7).

**4.** Torque all fasteners to 75 ft-lbs.

### WARNING

Regularly check this receiver hitch to ensure that all fasteners are tight and that all structural components are in good working condition.

## 1801300 2.5" Hitch

## 1801301 2" Hitch

1962 – 1987 Chevy/GMC F/S Pickup, Except Short Bed (With 10" Bumper)

1988 – Current Chevy/GMC cab and chassis, (With 10" Step Bumper and 34" Frame Width)

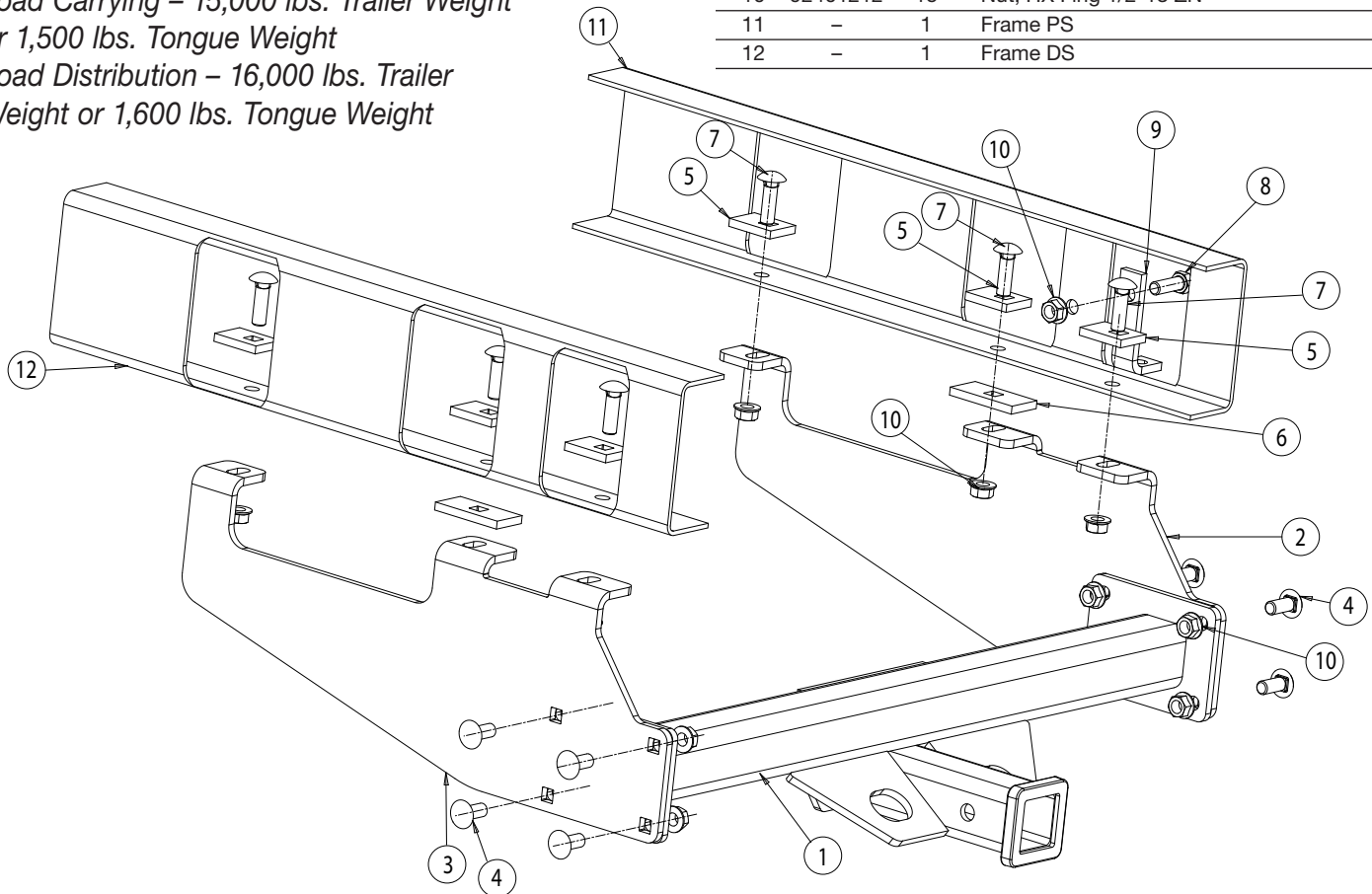
### Capacity

Load Carrying – 15,000 lbs. Trailer Weight or 1,500 lbs. Tongue Weight

Load Distribution – 16,000 lbs. Trailer Weight or 1,600 lbs. Tongue Weight

### Bill of Materials

ITEM	PART NO.	QTY.	DESCRIPTION
1	3014737	1	Hitch, Center Mount Weldment
2	3014732	1	Side Plate, PS Universal 34" Hitch
3	3014733	1	Side Plate, DS Universal 34" Hitch
4	3012580	8	Bolt, Carriage 1/2-13 x 1.25 Gr. 5 ZN
5	3014859	6	Rectangle, Square Hole 2" L
6	3014860	2	Rectangle, Square Hole 3" L
7	3002215	6	Bolt, Carriage 1/2-13 x 1.75 Gr. 5 ZN
8	3006202	1	Screw, Hex HD 1/2-13 x 1-1/2 Gr. 8 ZN
9	3014861	1	Bracket, Tire
10	92401212	15	Nut, HX Flng 1/2-13 ZN
11	–	1	Frame PS
12	–	1	Frame DS



1. Remove the spare tire for now.
2. Remove the bumper reinforcement brackets. It is not to be re-used since the bumper will no longer be used for towing.
3. Secure the two SidePlates (item 2&3) onto the Center Mount Weldment (1) using eight Carriage bolts (4) and eight Flange nuts (10) as shown.
4. Position the small Rectangular Spacer (5) at the three designated holes. **NOTE: These holes may have to be drilled/enlarged Ø.531" and align with the SidePlates (2&3).**
5. Raise the Hitch into position where the Rectangles are positioned. Use the 3 inch Spacer in between if the hitch is angled to an in-appropriate position. Secure the Hitch onto the frame using six Carriage bolts (7) and six Flange nuts (10).
6. Position the Tire Bracket (9) onto the frame. You may have

to locate the best position for the tire (approximately 6" forward is recommended).

7. Torque all fasteners to 75 ft-lbs.

8. Replace the tire all possible parts that was removed for this installation.

### WARNING

Regularly check this receiver hitch to ensure that all fasteners are tight and that all structural components are in good working condition.

## 1801300 2.5" Hitch

## 1801301 2" Hitch

1967 – 1998 Ford Pick-up (All Full Size W/10" step bumpers, old body style)

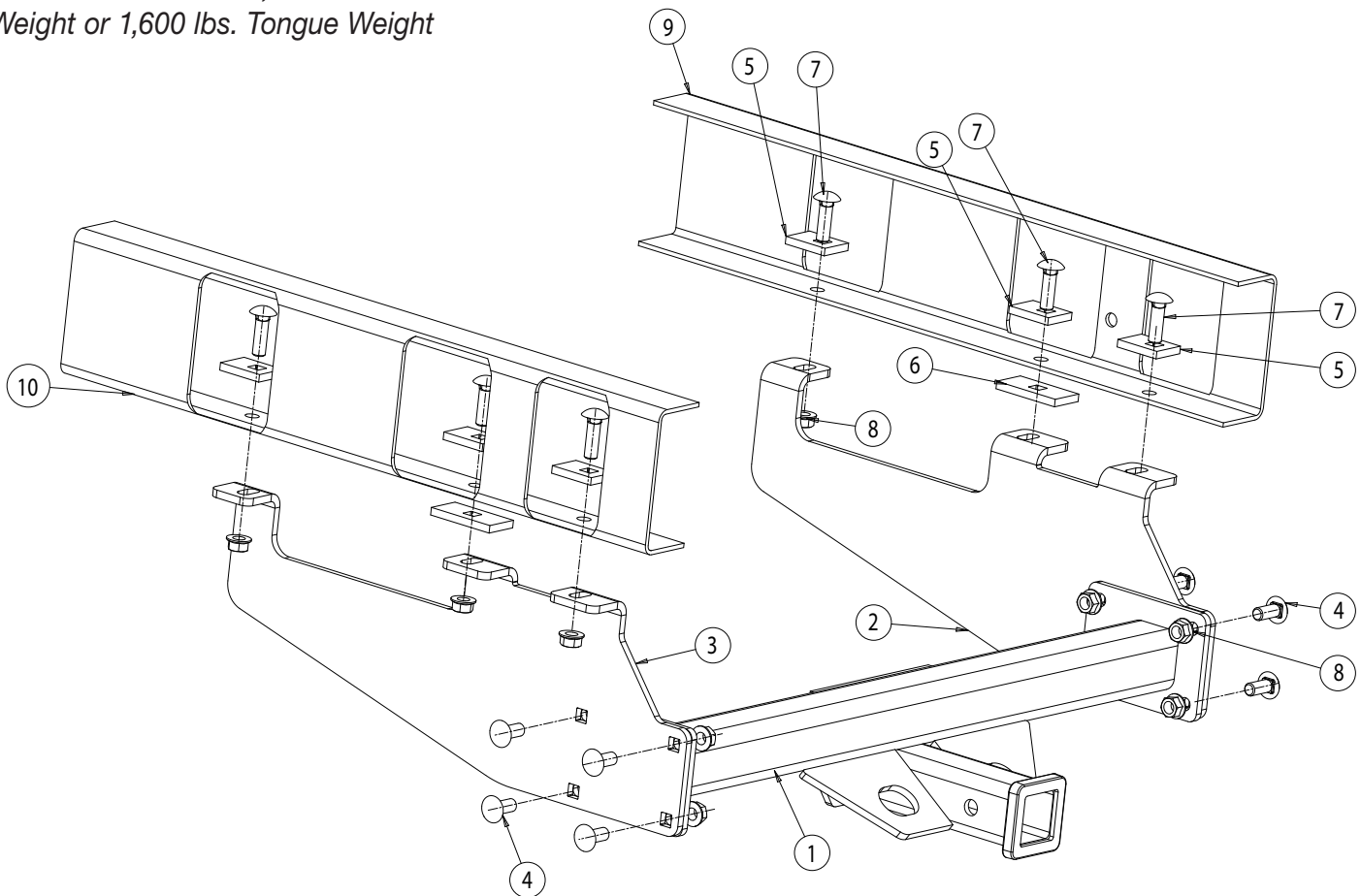
### Capacity

Load Carrying – 15,000 lbs. Trailer Weight  
or 1,500 lbs. Tongue Weight

Load Distribution – 16,000 lbs. Trailer  
Weight or 1,600 lbs. Tongue Weight

### Bill of Materials

ITEM	PART NO.	QTY.	DESCRIPTION
1	3014737	1	Hitch, Center Mount Weldment
2	3014733	1	Side Plate, DS Universal 34" Hitch
3	3014732	1	Side Plate, PS Universal 34" Hitch
4	3012580	8	Bolt, Carriage 1/2-13 x 1.25 Gr. 5 ZN
5	3014859	6	Rectangle, Square Hole 2" L
6	3014860	2	Rectangle, Square Hole 3" L
7	3002215	6	Bolt, Carriage 1/2-13 x 1.75 Gr. 5 ZN
8	92401212	14	Nut, HX Flng 1/2-13 ZN
9	–	1	Frame PS
10	–	1	Frame DS



**1.** Fasten the two SidePlates (item 2&3) onto the Center Mount Weldment (1) using eight Carriage bolts (4) and eight Flange nuts (8) as shown.

**2.** Position the small Rectangular Spacer (5) at the three designated holes. **NOTE: These holes may have to be drilled/enlarged Ø.531" and align with the SidePlates (2&3). Use a clamp and mark the holes if necessary.**

**3.** Raise the Hitch into position where the Rectangles are positioned. Use the 3 inch Spacer in between if the hitch is angled to an in-appropriate position.

Secure the Hitch onto the frame using six Carriage bolts (7) and six Flange nuts (8).

**4.** Torque all fasteners to 75 ft-lbs.

**5.** Replace the tire all possible parts that was removed for this installation.

### WARNING

Regularly check this receiver hitch to ensure that all fasteners are tight and that all structural components are in good working condition.

## 1801300 2.5" Hitch

## 1801301 2" Hitch

1972 – 1995 Dodge Truck (All full size with 10" step bumper)

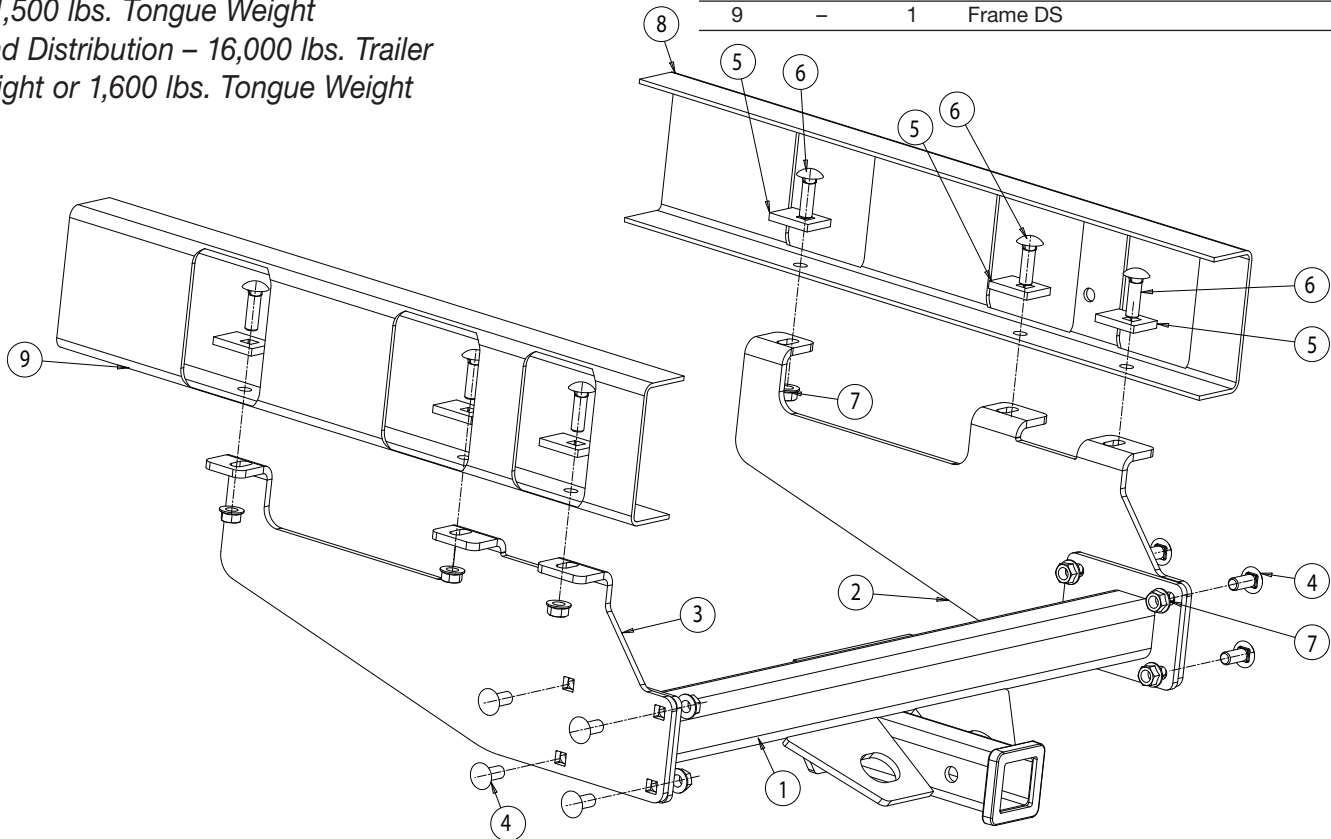
### Capacity

Load Carrying – 15,000 lbs. Trailer Weight  
or 1,500 lbs. Tongue Weight

Load Distribution – 16,000 lbs. Trailer Weight  
or 1,600 lbs. Tongue Weight

### Bill of Materials

ITEM	PART NO.	QTY.	DESCRIPTION
1	3014737	1	Hitch, Center Mount Weldment
2	3014733	1	Side Plate, DS Universal 34" Hitch
3	3014732	1	Side Plate, PS Universal 34" Hitch
4	3012580	8	Bolt, Carriage 1/2-13 x 1.25 Gr. 5 ZN
5	3014859	6	Rectangle, Square Hole 2" L
6	3002215	6	Bolt, Carriage 1/2-13 x 1.75 Gr. 5 ZN
7	92401212	14	Nut, HX Flng 1/2-13 ZN
8	–	1	Frame PS
9	–	1	Frame DS



**1.** Remove the spare tire for now. (model 1972 – 1993). Remove rear exhaust hanger bracket. (model 1994 – 1995).

**2.** Secure the two SidePlates (item 2&3) onto the Center Mount Weldment (1) using eight Carriage bolts (4) and eight Flange nuts (7) as shown.

**3.** Position the small Rectangular Spacer (5) at the three designated holes. **NOTE: These holes may have to be drilled/enlarged Ø.531" and align with the SidePlates (2&3).**

**4.** Raise the Hitch into position where the Rectangles are positioned. Secure the Hitch onto the frame using six Carriage bolts (6) and six Flange nuts (7).

**5.** Torque all fasteners to 75 ft-lbs.

**6.** Replace the tire all possible parts that was removed for this installation.

### WARNING

Regularly check this receiver hitch to ensure that all fasteners are tight and that all structural components are in good working condition.

### Warranty

Buyers Products Co. warrants all truck/trailer hardware manufactured or distributed by it, to be free from defects in material and workmanship for a period of one year from date of shipment. Parts must be properly installed and used under normal conditions. Any product which has been altered, including modification, misuse, accident or lack of maintenance will not be considered under warranty. Normal wear is excluded. The sole responsibility of Buyers Products Co. under this warranty is limited to repairing or replacing any part or parts which are returned, prepaid, and are found to be defective by Buyers Products Co. Authorization from Buyers Products Co. must be obtained before returning any part. No charges for transportation or labor performed on Buyers' products will be allowed under this warranty.