

INSTRUCTION SHEET FOR MODEL SML-SM BRACKET KIT

SAFETY MESSAGE TO INSTALLERS

People's lives depend on your safe installation of our products. It is important to read, understand and follow all instructions shipped with the products. In addition, listed below are some other important safety instructions and precautions you should follow:

- To properly install mounting kit: you must have a good understanding of automotive electrical procedures and systems, along with proficiency in the installation and use of safety warning equipment.
- When drilling into a vehicle structure, be sure that both sides of the surface are clear of anything that could be damaged.
- Inspect the mounting system periodically to ensure it is in good condition.
- Refer to instruction sheet packed with light for proper electrical connections.
- File these instructions in a safe place and refer to them when maintaining and/or reinstalling the product.

Failure to follow all safety precautions and instructions may result in property damage, serious injury, or death to you or others.

A. GENERAL.

The SML-SM is a bracket kit designed for mounting two SML1 (or SML2) units on Federal Models SML6 or SML8 directional light assemblies. The brackets allow the SML1 or SML2 to be installed above or below the directional light assembly and allow adjustment forward/back or parallel.

B. UNPACKING.

After unpacking the kit, carefully check all envelopes, shipping labels, and tags before removing

or destroying them. Ensure that the parts listed in the KIT CONTENTS LIST are contained in the packing carton.

C. KIT CONTENTS LIST.

Qty.	Description	Part Number
12	Bolt, Carriage, 1/4-20	7004A020-08
12	Nut, Machine, Hex, 1/4-20	7059109
12	Lockwasher, Ext. Tooth, 1/4	7075078
4	Bracket, Adapter, Slotted	8573123

D. INSTALLATION.

NOTE

For maximum coverage and effectiveness, mount the light assembly in a horizontal orientation.

Before proceeding with installation, determine the mounting position appropriate for the installation. After the mounting position has been determined, follow the instructions in the appropriate paragraph.

1. *Flush Mounting on Six-Lamp or Eight-Lamp Unit.*

a. See figure 1. Assemble the brackets using two carriage bolts, lockwashers and nuts for each pair of brackets.

b. Remove an end cap from each unit. See figure 2. Slide two carriage bolts in the slot of each SML1/SML2 and four carriage bolts in the slot of the SML6/SML8. Replace the end caps.

c. Place an SML1/SML2 in the desired position. Secure a bracket assembly to the light assemblies using lockwashers and nuts. Repeat on the other end.

d. Refer to the instructions supplied with the mounting kit to complete the installation.

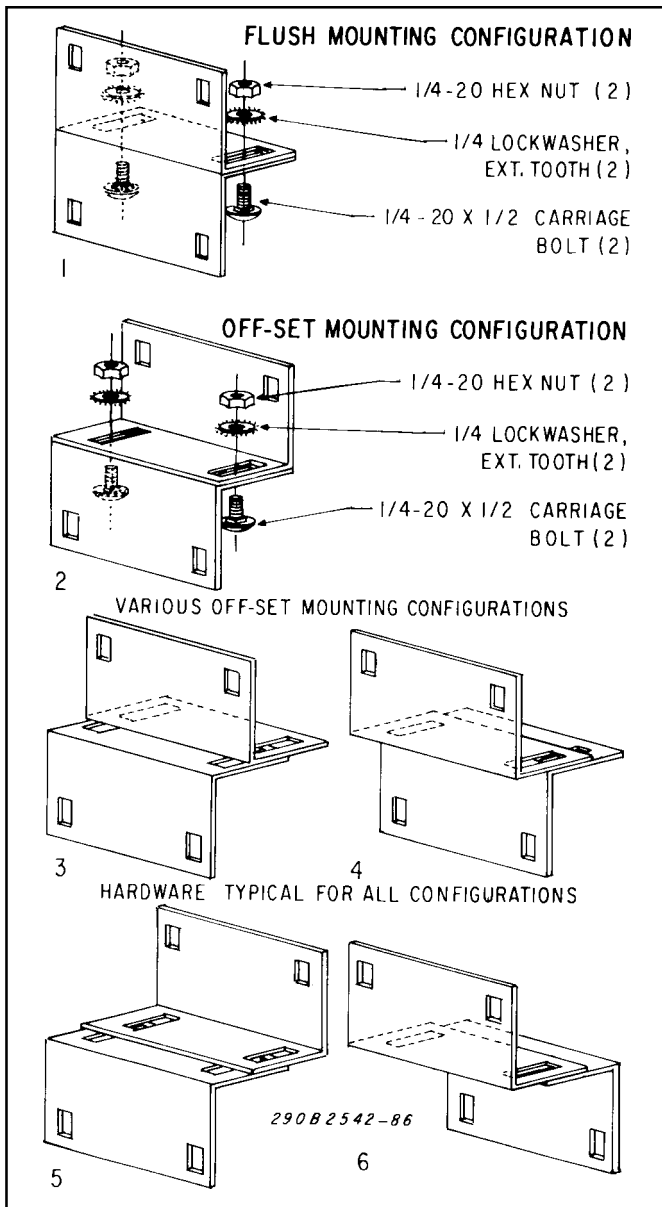


Figure 1.

2. Offset Mounting.

- a. Determine the mounting arrangement which best suits the installation.
- b. See figure 1. Assemble the brackets in the desired configuration using two carriage bolts, lockwashers and nuts for each pair of brackets.

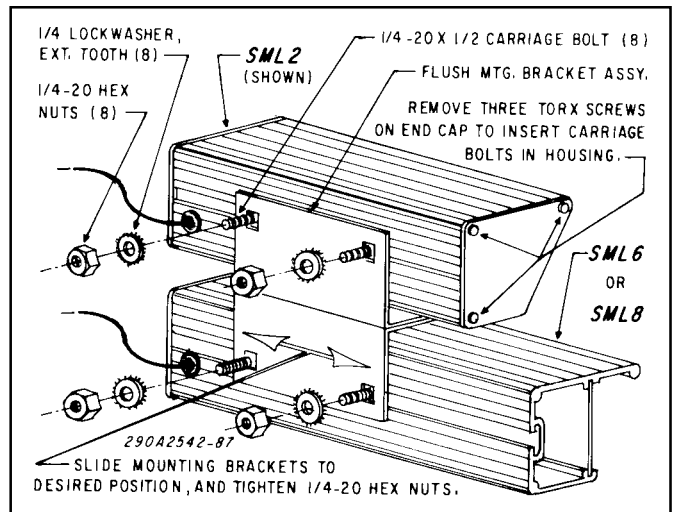


Figure 2.

- c. Remove an end cap from each unit. Slide two carriage bolts in the slot of each SML1/SML2 and four carriage bolts in the slot of the SML6/SML8. Replace the end caps.

- d. See figure 3. Place an SML1/SML2 in the desired position. Secure a bracket assembly to the light assemblies using lockwashers and nuts. Repeat on the other end.

- e. Refer to the instructions supplied with the mounting kit to complete the installation.

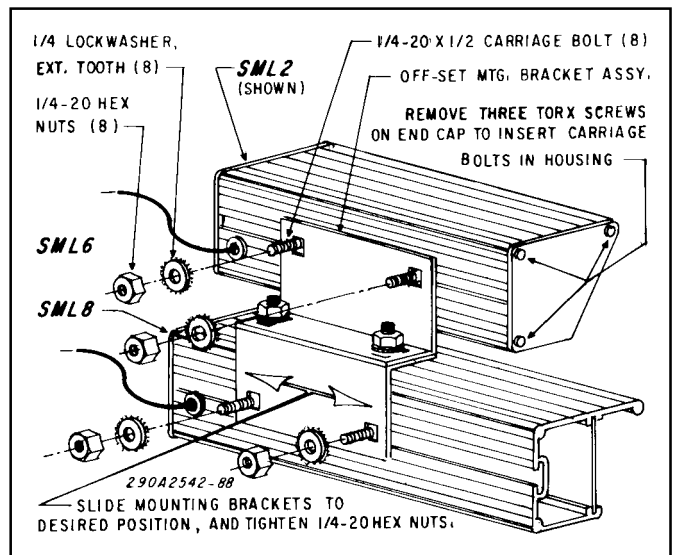


Figure 3.