

► 416300 Series | Exterior Mount/Perimeter Warning Light

FEATURES

- Utilizes (3) or (6) LEDs
- Available in single- and dual-color models
- (17) flash patterns including random and steady
- Single/multi-unit synchronization
- Flush mount with two different size grommets; optional L-bracket for single-color models only, sold separately
- UV resistant polycarbonate lens
- Steady burn models are available for use with the Pathfinder® siren or other external flashers
- Five-year warranty

APPROVAL

- All models are IP67 rated, moisture and dust proof

Versatile, Flush Mount Warning Light

The 416300 Series models utilize (3) or (6) LEDs and includes (17) built-in flash patterns. The 416300 Series models come in a variety of LED colors including Amber, Blue, Red, and White, as well as dual-color combinations. To accommodate multiple mounting applications, the 416300 Series includes two different size grommets for flush mounting to create an appealing look perfect for undercover police vehicles. An optional L-bracket, for single-color models, is available for even more versatile mounting. The 416300 Series is ideal for mounting in a variety of applications such as tailgates, running boards, push bumpers, grille, side mirrors and inside of trunk lids and door panels.

Select dual-color models are also available in Steady Burn models for use with the Pathfinder® Siren. The combination of Steady Burn models and the Pathfinder Siren allow the Pathfinder to control lights around the vehicle by utilizing flash patterns in the siren, syncing/alternating light heads, and dimming light heads.

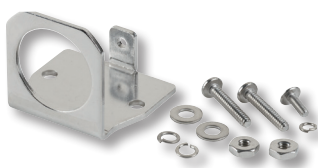
Built to Last

The 416300 Series lens is made of UV resistant polycarbonate to protect against harsh conditions. Certified to meet IP67, the 416300 Series have a fully encapsulated water-proof housing that provides a barrier against dust and moisture.

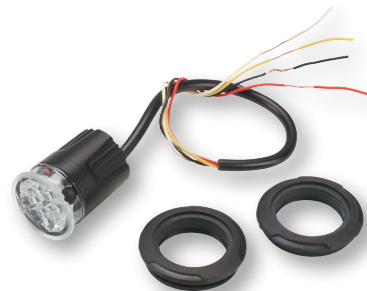
Single-color models have (3) LEDs



Dual-color models have (6) LEDs - (3) per color



Optional L-Bracket Kit
(Single-color models only)



Two different size grommets included for flush mounting



Specify model

Flush mount, Single-Color, Clear Lens, 12 Vdc

- 416300-A (3) LED, Amber
- 416300-B (3) LED, Blue
- 416300-R (3) LED, Red
- 416300-W (3) LED, White

Flush mount, Dual-Color, Clear Lens, 12/24 Vdc

- 416300-BA (6) LEDs, Blue/Amber
- 416300-RB (6) LEDs, Blue/Red
- 416300-BW (6) LEDs, Blue/White
- 416300-RA (6) LEDs, Red/Amber
- 416300-RW (6) LEDs, Red/White
- 416300-AW (6) LEDs, Amber/White

Flush mount, Single-Color, Clear Lens, Steady Burn, 12 Vdc

- 416300X-B (3) LED, Steady burn, Blue
- 416300X-R (3) LED, Steady burn, Red

Flush mount, Dual-Color, Clear Lens, Steady Burn, 12/24 Vdc

- 416300X-BW (6) LEDs, Blue/White
- 416300X-RW (6) LEDs, Red/White
- 416300X-RB (6) LEDs, Blue/Red

Accessory

- 416301 L-bracket kit for use with single-color models only

Pattern	Name
1	Triple 92.3 (All)
2	Triple 90 (All)
3	Single 122 (All)
4	Single 75 (All)
5	Single 90 (All)
6	Single 113 (All)
7	Single 73 (All)
8	Double 73 (All)
9	Triple 73 (All)
10	Quad 73 (All)
11	Quint 73 (All)
12	Mega (All)
13	Ultra (All)
14	Single-Quad (All)
15	Single H/L (All)
16	Steady All (All)
17	Random

SPECIFICATIONS

	Single-Color	Dual-Color
Voltage	12 Vdc	12/24 Vdc
Operating Temp	-40°C to 80°C	
Physical Specifications Light Head		
Diameter	1.04 in (2.6 cm)	
Depth	1.34 in (3.4 cm)	1.11 in (2.8 cm)
Physical Specifications Grommet		
Diameter	1.42 in (3.6 cm)	
Depth	1.54 in (3.9 cm)	1.28 in (3.3 cm)
Ship Weight		
	0.15 lbs (0.1 kg)	

