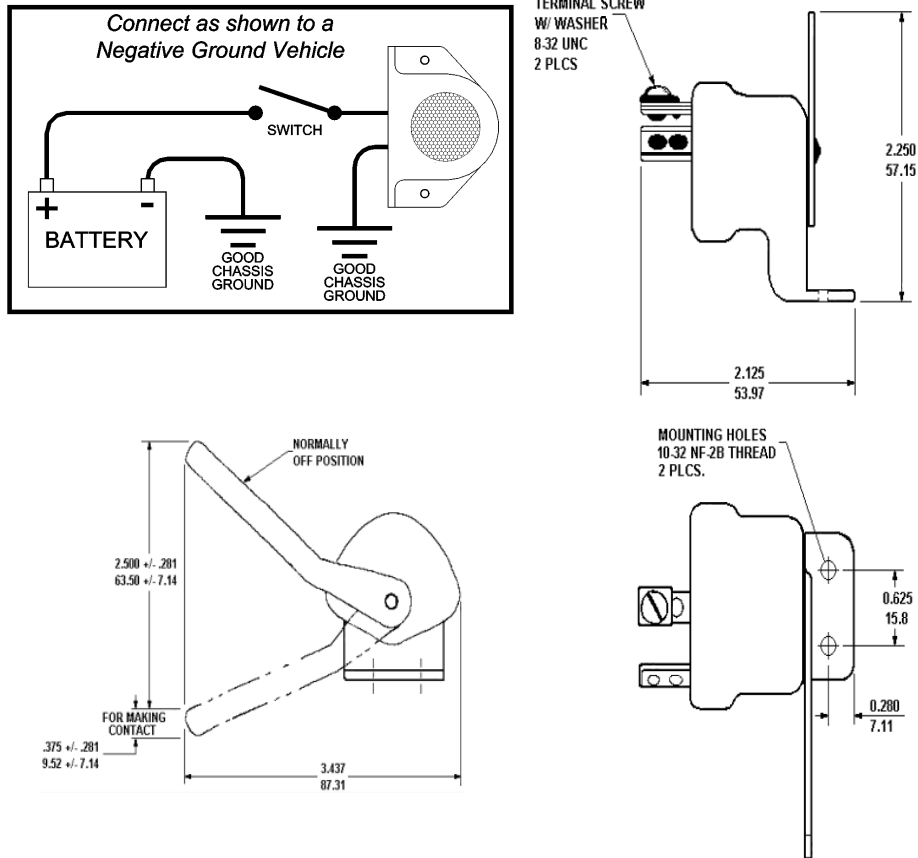


# Model 63-643 Back Up Alarm Switch

A MECHANICAL SWITCH FOR USE WITH BACK-UP ALARMS

Install the switch adjacent to the gear shift lever so that shifting into reverse will move the switch actuator arm sufficiently to make electrical contact.



If you have any questions concerning this or any other product, please contact our **Customer Service Department** at (585) 226-9787.

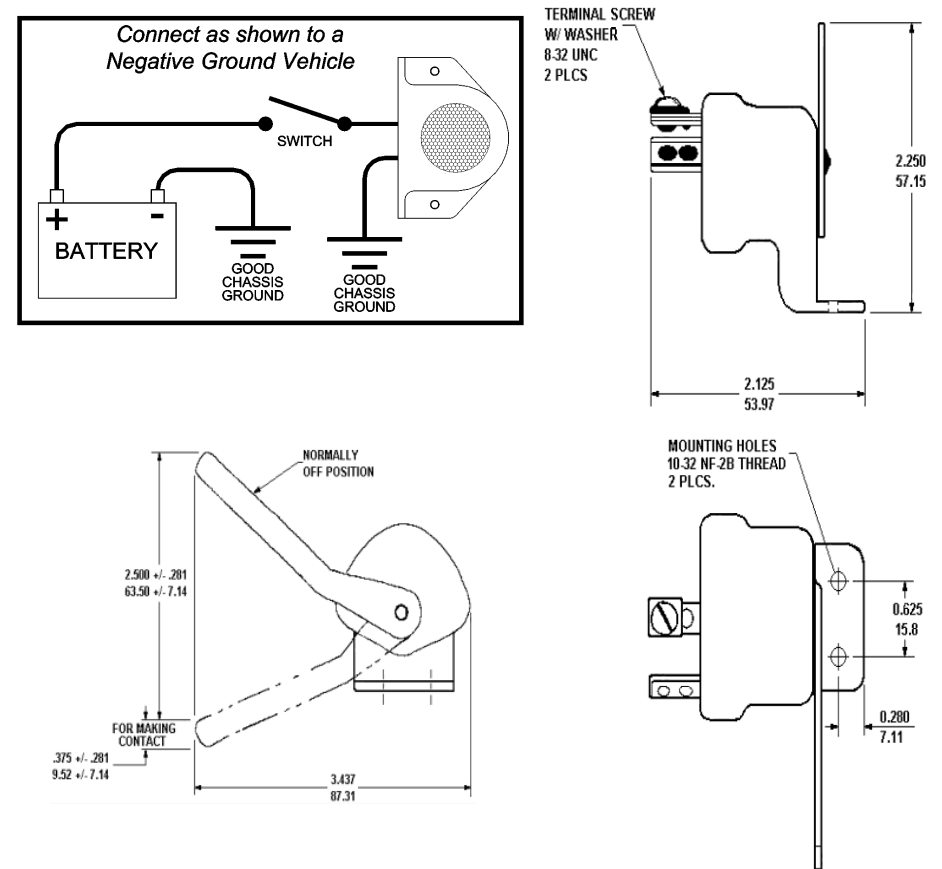
If a product must be returned for any reason, please contact our Customer Service Department to obtain a Returned Materials Authorization number (RMA #) before you ship the product back. Please write the RMA # clearly on the package near the mailing label.



# Model 63-643 Back Up Alarm Switch

A MECHANICAL SWITCH FOR USE WITH BACK-UP ALARMS

Install the switch adjacent to the gear shift lever so that shifting into reverse will move the switch actuator arm sufficiently to make electrical contact.



If you have any questions concerning this or any other product, please contact our **Customer Service Department** at (585) 226-9787.

If a product must be returned for any reason, please contact our Customer Service Department to obtain a Returned Materials Authorization number (RMA #) before you ship the product back. Please write the RMA # clearly on the package near the mailing label.

