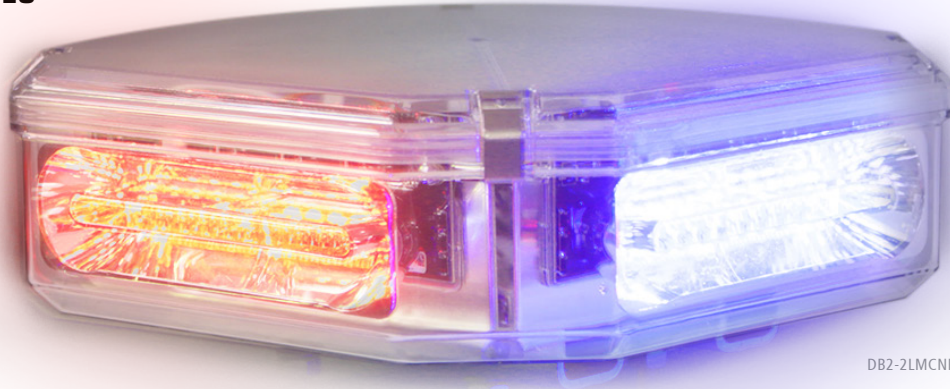
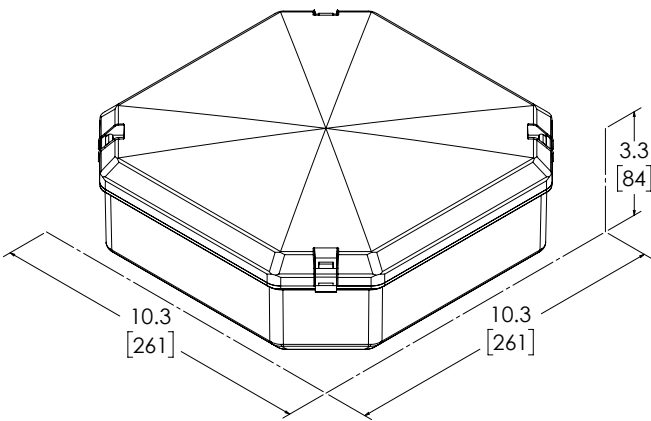


## DUOBEAM™ II SERIES 10" LED MICROBAR



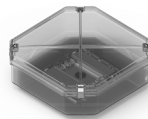
The DuoBeam™ II Series features advanced optics that are designed to maximize light output and the microbar is ideal for apparatus applications. Choose from single- or double-stack models and PriZm™ II or Torus™ LED lightheads. With 19 flash patterns and single- or split-color options, configure this versatile warning light to meet the organization's needs and budget. Additional features include easy-to-install, carriage bolt track mounting, a moisture resistant design and independent flashing or central control heads.



VOLTS   AMPS	12V   2.0A (12 LED) 6.4 (22 LED)
DIMS	3.3" H x 10.3" L x 10.3" D   83mm H x 261mm L x 261mm D
FLASH PATTERNS	19
CERTS	CLASS I (SAE J845), CA T13, NFPA

- DETAILS**
- Streamlined square shape is designed for intense light and works well in pairs for each side of the apparatus
  - Available in single stack PriZm™ II and Torus™ LED lightheads, and available in Torus™ lightheads in double stack
  - Standard lightbar mounting (carriage bolt track)
  - Moisture resistant
  - Independent flashing or central control heads available
  - Contact Code 3 for additional models at (314) 426-2700
  - Temperature Range: -22°F to +122°F (-30°C to +50°C)

MODEL	TYPE	LENS	ILLUMINATION COLORS
DB2-2PZNFPA1	Single, 12 LED	R	R
DB2-2PZNFPA2	Single, 12 LED	C	R
DB2-2LMCNFPA1	Split, 22 LED	C	RB



**DB2SHELL**  
Frame & Clear Lens