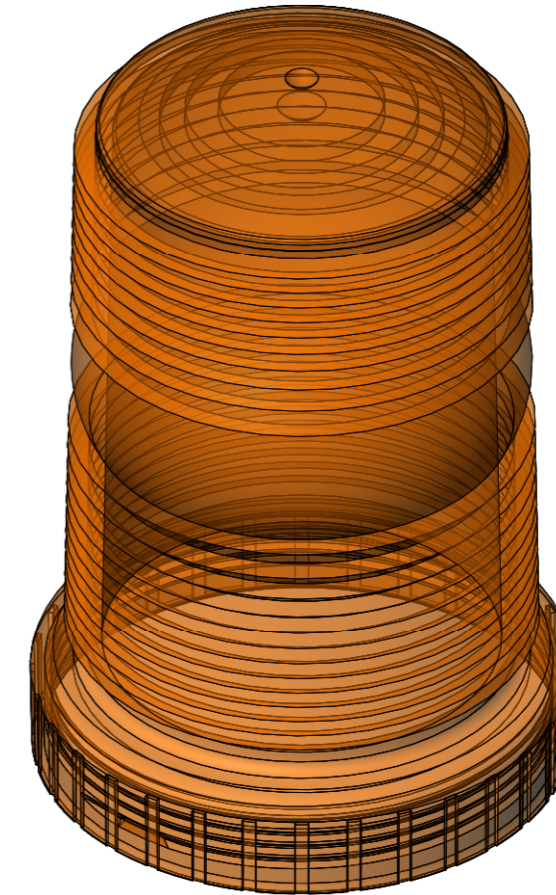


R6220LA RPK PROCEDURE

REVISION HISTORY		
REV.	DESCRIPTION	DATE
01	PRELIMINARY RELEASE PER VA CR 1664	2014-03-27
A	INITIAL RELEASE PER VA CR 1664	2014-03-27

1. TAKE LENS 910.085 AND PLACE INTO BUBBLE BAG 985.060.
2. PLACE THE LENS AND PLACE INTO BOX 955-0052-00.
3. FOLD THE BOX SHUT.
4. PLACE BOX LABEL SHOWN AND PLACE ON TOP OF BOX.



ISOMETRIC VIEW

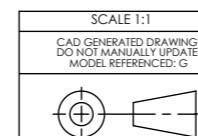
BOX LABEL

LOCATION: COMPUTER > H Drive > DATAMAX LABELS > ECCO

	<p>REPLACEMENT LENS AMBER</p>
	<p>Boise, Idaho 1-800-635-5900 (US) / www.eccogroup.com Leeds, England: (0)113 237 5340 (UK) / +44 (0) 113 237 5555 (Export) Launceston, Australia: +61(0)36 332 2444</p>
<p>Model # R6220LA</p>	

NON DISCLOSURE AGREEMENT

THIS DRAWING AND THE DESIGN IT DISCLOSES ARE THE PRIVATE PROPERTY OF ECCO AND IS ISSUED IN CONFIDENCE FOR ENGINEERING INFORMATION ONLY. THE DRAWING AND / OR DESIGN MAY NOT BE USED, COPIED, REPRODUCED, OR OTHERWISE DISCLOSED IN PART OR AS A WHOLE TO OUTSIDERS OR USED FOR ANY OTHER PURPOSE WITHOUT THE PRIOR WRITTEN CONSENT OF ECCO. THE DRAWING IS SUBJECT TO RECALL AT ANY TIME. YOUR POSSESSION OF THIS DOCUMENT CONSTITUTES ACCEPTANCE OF THESE TERMS. © 2013 ECCO



APPROVALS	DATE
DRAWN BY: MPS	2014-03-27
CHECKED: MMG	2014-03-27
MECH. ENG.: MPS	2014-03-27
ELEC. ENG.:	
MFG. ENG.:	

	<p>Group Headquarters & North American Division 1-800-635-5900 European Division +44 (0) 113 237 5340 Pacific Asia Division +61 (0) 363 322400 www.eccogroup.com</p>	
	<p>LENS, STROBE, 6220, AMBER</p>	
<p>SIZE: A</p>	<p>DWG. NO. R6220LA</p>	<p>REV. A</p>
<p>Electronically Controlled Use Latest Copy SHEET 1 OF 1</p>		<p>Project: VA CR 1664 Date Created: 27/03/2014</p>