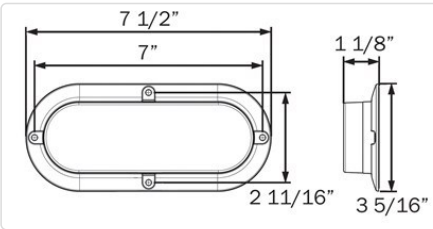


## GloLight



### STL178 SERIES

#### STL178RMB

Red stop/turn/tail light, hard wired, three-pin female weathertight connector

Polypack part no. STL178RMBP

<b>Color</b>	Red
<b>Diodes</b>	16
<b>Lumens</b>	--
<b>Mount</b>	Flange - Surface
<b>Connection</b>	Hard wired, three-pin female weathertight connector
<b>Pack Qty</b>	10
<b>FMVSS</b>	S2 T2 I6
<b>Housing Material</b>	Polycarbonate
<b>Lens Material</b>	Polycarbonate
<b>Voltage</b>	12V
<b>Amp Draw</b>	.59 Stop/Turn, .295A Tail
<b>Warranty</b>	Lifetime LED Warranty
<b>Weight</b>	0.380 lbs.
<b>Size/Shape</b>	6" Oval
<b>Dimensions</b> (W x H x D)	7.500 x 3.300 x 1.100

### Accessories

Bulk	Description	Qty
BK70BB	Steel mounting bracket for 6" lights, powder coated, black	10
A178TRSSB	Stainless steel screw mount trim ring for surface flange mount lights (fits STL73/78/002/111/211/1211 series)	50