

Eyelet Style Lugs

Heavy-Duty Closed-End Crimpable Eyelet Lugs

Features:

- Sized for fine stranded wire
- Deep drawn eyelet style
- Rated 600V applications
- UL listed, CSA Certified
- Crimps in industry standard tooling
- Seamless barrel design**
- Can be easily soldered or crimped
- Flared barrel entry for easy wire insertion
- Tin plating for corrosion resistance
- Seamless pads prevent wicking**
- AWG wire size identification barrel
- 100% conductivity;
Made of CDA-110 copper

**Certain terminals with "wide pads" will have a seam, but maintain a constant wall thickness.

8 AWG / 8 FLEX

PART #	STUD SIZE
SYBCL810PL	10
SYBCL814PL	1/4" (6.35mm)
SYBCL8516PL	5/16" (13mm)
SYBCL838PL	3/8" (9.525mm)
SYBCL812PL	1/2" (12.7mm)

6 AWG / 6 FLEX

PART #	STUD SIZE
SYBCL610PL	10
SYBCL614PL	1/4" (6.35mm)
SYBCL6516PL	5/16" (13mm)
SYBCL638PL	3/8" (9.525mm)
SYBCL612PL	1/2" (12.7mm)

4 AWG / 4 FLEX

PART #	STUD SIZE
SYBCL410PL	10
SYBCL414PL	1/4" (6.35mm)
SYBCL4516PL	5/16" (13mm)
SYBCL438PL	3/8" (9.525mm)
SYBCL412PL	1/2" (12.7mm)

● COLOR CODE: Red*

● COLOR CODE: Blue*

● COLOR CODE: Gray*

2 AWG / 2 FLEX

PART #	STUD SIZE
SYBCL214PL	1/4" (6.35mm)
SYBCL2516PL	5/16" (13mm)
SYBCL238PL	3/8" (9.525mm)
SYBCL212PL	1/2" (12.7mm)

● COLOR CODE: Brown*

1 AWG / 1 FLEX

PART #	STUD SIZE
SYBCL114PL	1/4" (6.35mm)
SYBCL1516PL	5/16" (13mm)
SYBCL138PL	3/8" (9.525mm)
SYBCL112PL	1/2" (12.7mm)

● COLOR CODE: Green*

1/0 AWG / 1/0 FLEX

PART #	STUD SIZE
SYBCL1014PL	1/4" (6.35mm)
SYBCL10516PL	5/16" (13mm)
SYBCL1038PL	3/8" (9.525mm)
SYBCL1012PL	1/2" (12.7mm)

● COLOR CODE: Pink*

Parts Shown Actual Size

Eyelet Style Lugs

2/0 AWG / 2/0 FLEX

PART #	STUD SIZE
SYBCL2014PL	1/4" (6.35mm)



SYBCL20516PL	5/16" (13mm)
--------------	--------------



SYBCL2038PL	3/8" (9.525mm)
-------------	----------------



SYBCL2012PL	1/2" (12.7mm)
-------------	---------------



● COLOR CODE: Black*

3/0 AWG / 3/0 FLEX

PART #	STUD SIZE
SYBCL3014PL	1/4" (6.35mm)



SYBCL30516PL	5/16" (13mm)
--------------	--------------



SYBCL3038PL	3/8" 9.525mm)
-------------	---------------



SYBCL3012PL	1/2" (12.7mm)
-------------	---------------



● COLOR CODE: Orange*

4/0 AWG / 4/0 FLEX

PART #	STUD SIZE
SYBCL4014PL	1/4" (6.35mm)



SYBCL40516PL	5/16" (13mm)
--------------	--------------



SYBCL4038PL	3/8" 9.525mm)
-------------	---------------



SYBCL4012PL	1/2" (12.7mm)
-------------	---------------



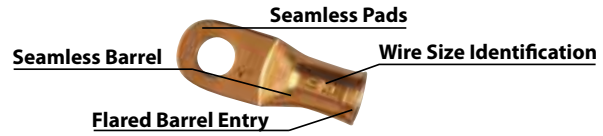
● COLOR CODE: Purple*

Parts Shown Actual Size

Lugs & Splices

Eyelet Style Lugs - Copper

- UL listed, CSA Certified
- Flared barrel entry for easy wire insertion
- Made of CDA-110 copper offering 100% conductivity



8 AWG		6 AWG		4 AWG	
PART #	STUD SIZE	PART #	STUD SIZE	PART #	STUD SIZE
SYBCL810	#10	SYBCL610	#10	SYBCL410	#10
SYBCL814	1/4" (6.35mm)	SYBCL614	1/4" (6.35mm)	SYBCL414	1/4" (6.35mm)
SYBCL8516	5/16" (13mm)	SYBCL6516	5/16" (13mm)	SYBCL4516	5/16" (13mm)
SYBCL838	3/8" (9.525mm)	SYBCL638	3/8" (9.525mm)	SYBCL438	3/8" (9.525mm)
SYBCL812	1/2" (12.7mm)	SYBCL612	1/2" (12.7mm)	SYBCL412	1/2" (12.7mm)
2 AWG		1 AWG			
PART #	STUD SIZE	PART #	STUD SIZE		
SYBCL2014-BULK	1/4" (6.35mm)	SYBCL114	1/4" (6.35mm)		
SYBCL2516	5/16" (13mm)	SYBCL1516	5/16" (13mm)		
SYBCL238	3/8" (9.525mm)	SYBCL138	3/8" (9.525mm)		
SYBCL212	1/2" (12.7mm)	SYBCL112	1/2" (12.7mm)		

Parts Shown Actual Size

Eyelet Style Lugs - Copper

1/0 AWG

PART #	STUD SIZE
SYBCL1014	1/4" (6.35mm)
SYBCL10516	5/16" (13mm)
SYBCL1038	3/8" (9.525mm)
SYBCL1012	1/2" (12.7mm)

2/0 AWG

PART #	STUD SIZE
SYBCL2014	1/4" (6.35mm)
SYBCL20516	5/16" (13mm)
SYBCL2038	3/8" (9.525mm)
SYBCL2012	1/2" (12.7mm)

3/0 AWG

PART #	STUD SIZE
SYBCL3014	1/4" (6.35mm)
SYBCL3038	3/8" (9.525mm)

4/0 AWG

PART #	STUD SIZE
SYBCL40516	5/16" (13mm)
SYBCL4038	3/8" (9.525mm)
SYBCL4012	1/2" (12.7mm)

Parts Shown Actual Size

Lugs & Splices

Lugs

8 AWG

PART #	STUD SIZE
SY6408-050D	1/4" (6.35mm)
SY6408-050E	5/16" (13mm)
SY6408-050F	3/8" (9.525mm)

6 AWG

PART #	STUD SIZE
SY6406-050D	1/4" (6.35mm)
SY6406-050E	5/16" (13mm)
SY6406-050F	3/8" (9.525mm)

4 AWG

PART #	STUD SIZE
SY6404-050D	1/4" (6.35mm)
SY6404-0500E	5/16" (13mm)
SY6404-050F	3/8" (9.525mm)
SY6404-050H	1/2" (12.7mm)

1-2 AWG

PART #	STUD SIZE
SY6401-050D	1/4" (6.4mm)
SY6401-050E	5/16" (13mm)
SY6401-050F	3/8" (9.6mm)
SY6401-050H	1/2" (12.7mm)

1/0 AWG

PART #	STUD SIZE
SY6410-050D	1/4" (6.4mm)
SY6410-050E	5/16" (13mm)
SY6410-050F	3/8" (9.6mm)
SY6410-050H	1/2" (12.7mm)

2/0 AWG

PART #	STUD SIZE
SY6420-050D	1/4" (6.4mm)
SY6420-050E	5/16" (13mm)
SY6420-050F	3/8" (9.6mm)
SY6420-050H	1/2" (12.7mm)

Parts Shown Actual Size

Lugs

3/0 AWG

PART #
SY6430-050D



STUD SIZE

1/4"
(6.35mm)

SY6430-050E



5/16"
(13mm)

SY6430-050F



3/8"
(9.525mm)

SY6430-050H



1/2"
(12.7mm)

4/0 AWG

PART #
SY6440-050E



STUD SIZE

5/16"
(13mm)

SY6440-050F



3/8"
(9.525mm)

SY6440-050H



1/2"
(12.7mm)

Splices

50 Volt Rated

PART #
STUD SIZE



SYPS-8
8 GA



SYPS-6
6 GA



SYPS-4
4 GA



SY102456-050
1 - 2 GA



SYPS-1/0
1/0 GA



SYPS-2/0
2/0 GA



SYPS-3/0
3/0 GA

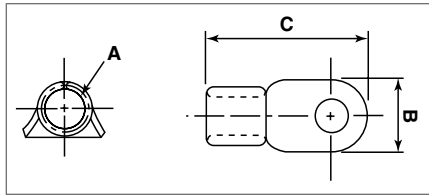


SYPS-4/0
4/0 GA

Parts Shown Actual Size

Lugs & Splices

Straight Lugs



6 AWG

PART #	STUD SIZE	A: DIA	B: WIDTH	C: LENGTH
SYT614S	1/4" (6mm)	.24" (6mm)	.48" (12mm)	1.21" (31mm)



SYT6516S	5/16" (8mm)	.24" (6mm)	.64" (16mm)	1.30" (33mm)
----------	----------------	---------------	----------------	-----------------



4 AWG

SYT4516S	5/16" (8mm)	.29" (7mm)	.67" (17mm)	1.39" (35mm)
----------	----------------	---------------	----------------	-----------------



SYT438S	3/8" (10mm)	.63" (16mm)	1.12" (28mm)	2.24" (57mm)
---------	----------------	----------------	-----------------	-----------------



2 AWG

SYT2516S	5/16" (8mm)	.36" (9mm)	.63" (16mm)	1.58" (40mm)
----------	----------------	---------------	----------------	-----------------



SYT238S	3/8" (10mm)	.36" (9mm)	.63" (16mm)	1.58" (40mm)
---------	----------------	---------------	----------------	-----------------



1/0 AWG

SYT10516S	5/16" (8mm)	.43" (11mm)	.82" (21mm)	1.95" (50mm)
-----------	----------------	----------------	----------------	-----------------

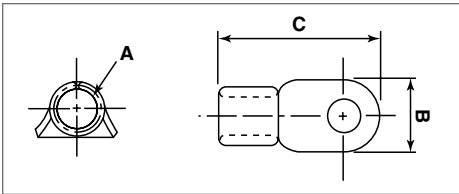


SYT1038S	3/8" (10mm)	.43" (11mm)	.82" (21mm)	1.95" (50mm)
----------	----------------	----------------	----------------	-----------------



Parts Shown Actual Size

Straight Lugs



2/0 AWG

PART #
SYT2038S



STUD SIZE

A: DIA

B: WIDTH

C: LENGTH

3/8"
(10mm)

.51"
(13mm)

.93"
(24mm)

2.05"
(52mm)

SYT2012S



1/2"
(13mm)

.51"
(13mm)

.93"
(24mm)

2.05"
(52mm)

3/0 AWG

SYT3038S



3/8"
(10mm)

.55"
(14mm)

1.05"
(27mm)

2.18"
(55mm)

SYT3012S



1/2"
(13mm)

.55"
(14mm)

1.05"
(27mm)

2.18"
(55mm)

4/0 AWG

SYT4038S



3/8"
(10mm)

.63"
(16mm)

1.12"
(28mm)

2.24"
(57mm)

SYT4012S



1/2"
(13mm)

.63"
(16mm)

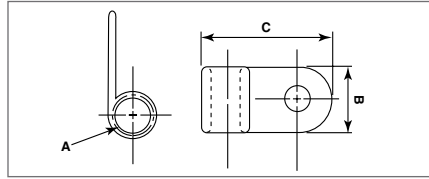
1.12"
(28mm)

2.24"
(57mm)

Parts Shown Actual Size

Lugs & Splices

Flag Lugs



6 AWG

PART #
SYT614F



STUD SIZE

1/4"
(6mm)

A: DIA

.24"
(6mm)

B: WIDTH

.49"
(12mm)

C: LENGTH

.99"
(25mm)

SYT6516F



5/16"
(8mm)

.24"
(6mm)

.63"
(16mm)

1.19"
(30mm)

4 AWG

SYT4516F



5/16"
(8mm)

.29"
(7mm)

.69"
(18mm)

1.34"
(34mm)

2 AWG

SYT2516F



5/16"
(8mm)

.36"
(9mm)

.71"
(18mm)

1.43"
(36mm)

SYT238F



3/8"
(10mm)

.36"
(9mm)

.71"
(18mm)

1.43"
(36mm)

1/0 AWG

SYT10516F



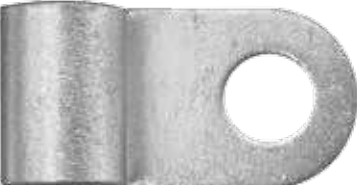
5/16"
(8mm)

.43"
(11mm)

.87"
(22mm)

1.74"
(44mm)

SYT1038F



3/8"
(10mm)

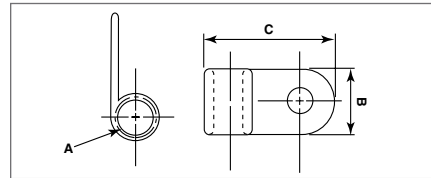
.43"
(11mm)

.87"
(22mm)

1.74"
(44mm)

Parts Shown Actual Size

Flag Lugs



PART #
SYT2038F

2/0 AWG



STUD SIZE
3/8"
(10mm)

A: DIA
.51"
(13mm)

B: WIDTH
.93"
(24mm)

C: LENGTH
1.85"
(47mm)

SYT2012F



1/2"
(13mm)

.51"
(13mm)

.93"
(24mm)

1.85"
(47mm)

SYT3038F

3/0 AWG



3/8"
(10mm)

.55"
(14mm)

1.05"
(27mm)

2.02"
(51mm)

SYT3012F



1/2"
(13mm)

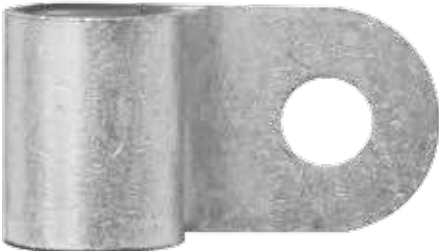
.55"
(14mm)

1.05"
(27mm)

2.02"
(51mm)

SYT4038F

4/0 AWG



3/8"
(10mm)

.63"
(16mm)

1.12"
(28mm)

2.12"
(54mm)

SYT4012F



1/2"
(13mm)

.63"
(16mm)

1.12"
(28mm)


2.12"
(54mm)


Parts Shown Actual Size


Lugs & Splices

Angle Lugs


- Made of 100% copper, tin plated for added conductivity and to resist corrosion
- Heavy wall copper lugs 80% heavier wall than standard lugs
- Wider pad for better electrical contact, ticker pad for greater strength and conductivity
- Elbows and bent lugs are designed to reduce cable stress in confined space
- Excellent for commercial and industrial applications
- Exceeds SAE conductivity standards J163 and J1811


90° LUGS	AWG	PART #	PART #
		1/2" (13MM)	3/8" (9.525MM)
	8	—	SY6408-050FL
	6	—	SY6406-050FL
	4	SY6404-050HL	SY6404-050FL
	1 & 2	SY6401-050HL	SY6401-050FL
	1/0	SY6410-050HL	SY6410-050FL
	2/0	SY6420-050HL	SY6420-050FL
	3/0	SY6430-050HL	SY6430-050FL
	4/0	SY6440-050HL	SY6440-050FL

45° LUGS	AWG	PART #
		1/2" (13mm)
	8	—
	6	—
	4	SY6404-050HV
	1 & 2	SY6401-050HV
	1/0	SY6410-050HV
	2/0	SY6420-050HV
	3/0	SY6430-050HV
	4/0	SY6440-050HV

3/8" (10MM) ELBOWS	AWG	PART #
		RIGHT
	1/0	SY6311-050F
	2/0	SY6312-050F
	3/0	SY6313-050F
	4/0	SY6314-050F
AWG		LEFT
	1/0	SY6321-050F
	2/0	SY6322-050F
	3/0	SY6323-050F
	4/0	SY6324-050F

Locking - Anti-Rotating Stackable

Dual	AWG	PART #
		DUAL CABLE
	1/0	SY6510-050F
	2/0	SY6520-050F
	3/0	SY6530-050F
	4/0	SY6540-050F

Single	AWG	PART #
		PART #
	1 & 2	SY102556-050
	1/0	SY6210-050F
	2/0	SY6220-050F
	3/0	SY6230-050F
	4/0	SY6240-050F

Butt Splice / Extra Long



PART #	SY102455-050	SY102456-050	SY102457-050	SY102458-050	SY102459-050	SY102460-050
STUD SIZE	4 GA	1-2 GA	1/0 GA	2/0 GA	3/0 GA	4/0 GA

Butt Splice / Flared Barrel



PART #	SYBCL8CC	SYBCL6CC	SYBCL4CC	SYBCL2CC	SYBCL1CC	SY102457-050	SY102458-050	SY102459-050	SY102460-050
STUD SIZE	8 GA	6 GA	4 GA	2 GA	1 GA	1/0 GA	2/0 GA	3/0 GA	4/0 GA

Parts Shown Actual Size