

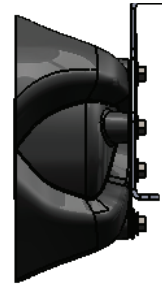


STAR HEADLIGHT & LANTERN Co.

D-44 CYCLONE™



D-44
with SPBRK-16



Specifications and Features

- Patented Cyclonic Expansion Chambers (Patent #8,265,320 B2 & D615,443 S)
- Ultra compact design - only 3" deep
- Rugged glass filled nylon housing - will not rust!
- User replaceable rear facing driver
- Over twenty mounting bracket options available
- Input voltage: 32V RMS
- Output: 100 watts
- Impedance: 11 ohm
- Decibels: 123 db
- Dimensions: 6.6" x 6.6" x 2.9"
- Weight: 8 lbs. (with bracket)
- Meets or exceeds acoustical requirements, & environmental requirements of SAE J1849

Model Numbers/Descriptions:

D-44	Speaker only
SPBRK-16	Universal "L" bracket
SPBRK-17	Center mount bracket, '03-'11 Ford Crown Victoria
SPBRK-18	'07-'14 Chevrolet Suburban, '07-'14 Chevrolet Tahoe
SPBRK-19	'06-'13 Chevrolet Impala
SPBRK-20	'06-'10 Dodge Charger, '05-'08 Dodge Magnum
SPBRK-21	Universal two piece adjustable bracket
SPBRK-22L	'08-'16 Ford F250 & F350, driver side
SPBRK-22R	'08-'16 Ford F250 & F350, passenger side
SPBRK-23	'08-20 Ford E250 & E350
SPBRK-24	'07-'15 Ford Expedition
SPBRK-27	'11-'20 Dodge Charger
SPBRK-28	'10-'20 Ford Taurus (Interceptor Sedan)
SPBRK-29	'11-'20 Ford F350
SPBRK-30	'11-'20 Dodge 4500
SPBRK-31	'11-'16 Chevrolet Caprice
SPBRK-32	'11-'20 dual bracket for Dodge Charger
SPBRK-33	'10-'15 Dodge Durango
SPBRK-34	'10-'20 dual bracket for Interceptor SUV
SPBRK-35	'15-'20 single bracket for Chevy Tahoe and Suburban
SPBRK-36	'15-'20 dual bracket for Chevy Tahoe and Suburban
SPBRK-37	'15-'20 Ford F150
SPBRK-38	'16-'20 Dodge Durango
D-44-FIS	'10-'20 Ford Interceptor Sedan, Direct Plug-N-Play
D-44-FISUV	'10-'20 Ford Interceptor SUV, Direct Plug-N-Play

Warning: Cancer and Reproductive Harm - www.P65Warnings.ca.gov

SF022 Rev H 04-17-2020

STAR
WARNING
SYSTEMS®

STAR SIGNAL
VEHICLE PRODUCTS®

Star Headlight & Lantern Co., Inc.

455 Rochester Street
Avon, NY 14414
Phone: 585-226-9500
Fax: 888-478-2797
starheadlight.com

BRADFORD™
Vehicle Solutions Inc.



PROUDLY MADE IN THE U.S.A.
An ISO 9001:2015 Certified Company

